

VACUUM VALVE SERIES VVA100



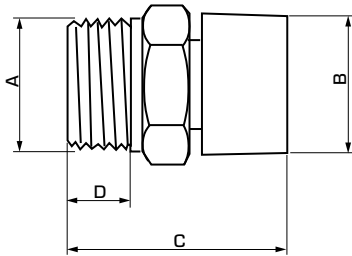
ESBE vacuum valves are intended as anti-siphonage devices.

OPERATION

ESBE's vacuum valve is intended as an anti-siphonage device for e.g. hot water tanks.

MEDIA

Maximum 50% glycol for freezing protection and oxygen absorbing compounds are allowed as additives.



TECHNICAL DATA

Pressure class: _____ PN 10
 Max. working temperature: _____ 90°C
 Connection: _____ External thread (G), ISO 228/1

Material

Body: _____ Dezincification resistant brass, DZR*
 Plug: _____ Plastic
 Spring: _____ Stainless steel
 O-ring: _____ EPDM

* Suitable for drinking water applications

PED 2014/68/EU, article 4.3 / SI 2016 No. 1105 (UK)

4MS/UBA
 4MS/KTW-BWGL

SERIES VVA100

Art. No.	Reference	DN	Connection A	B	C	D	Weight [kg]
36100100	VVA102	15	G 1/2"	22,0	33,0	9,0	0,03