

Pressrelease

Reftele, Sweden, 2021-02-16

ESBE building extension officially inaugurated

Preparatory groundwork has been carried out since March 2020. On the 16th of February the symbolic ground-breaking ceremony for ESBE extension 2021 was performed!



Those who had the honor to dig, using the special designed shovel were Robert Svensson Elajo EI, Peter Cerny ESBE, Daniel Gustavsson Jochnicks Rör, & Energiteknik, Roger Kettil Tage & Söner.

Photo: ESBE AB

Representatives from ESBE and the main contractors Tage & Söner, Jochnicks Rör and Elajo participated to break the first ground for the 2,700 square meter extension. An extension to ESBE's existing approximately 15,000 sqm in Reftele.

- We have received the trust from ESBE to carry out the construction. It is a joy that ESBE is investing in a large extension in Reftele, says Roger Kettil, representative from the construction company Tage & Söner.

It was an enjoyable event and as Sweden is also celebrating this special Tuesday as Fettisdagen ('Fat Tuesday' in Swedish) all the employees in Reftele was served a Semla bun!

ESBE plans to invest 30 million SEK in existing capacities, so that the company will enable both better flow for the freight traffic and increased growth opportunities for the production areas.

- The company is doing well and we are in urgent need of manufacturing area to be able to grow further, says Peter Cerny, President and CEO, who also announces that the company intends to hire additional employees when the extension of the ESBE building is completed.

All production, product development and sales, as well as headquarters are gathered in Reftele, this is one of ESBE's major strengths. Then there are sales companies that run marketing and sales in the Nordic region, Germany, France, Italy, Austria and Poland. Investments have recently been made for the office building with a solar cell system on the roof at Dachau / Munich warehouse and logistics center. ESBE exports to throughout 50 countries in Europe, this creates a lot of in and out traffic at ESBE every day. To facilitate the freight flow, the extension will also create improved traffic logistics in ESBE factory area.

ESBE is owned by a family that maintains the tradition of caring for the small village and the people who work and live there. Nature and the environment are in high focus as ESBE products are developed with the basic philosophy of contributing to energy efficiency in real estate. With this in mind, a solar energy system on the roof is also planned within the extension project. This will contribute to ESBE's total electricity needs, in addition to previous investments in local wind power.

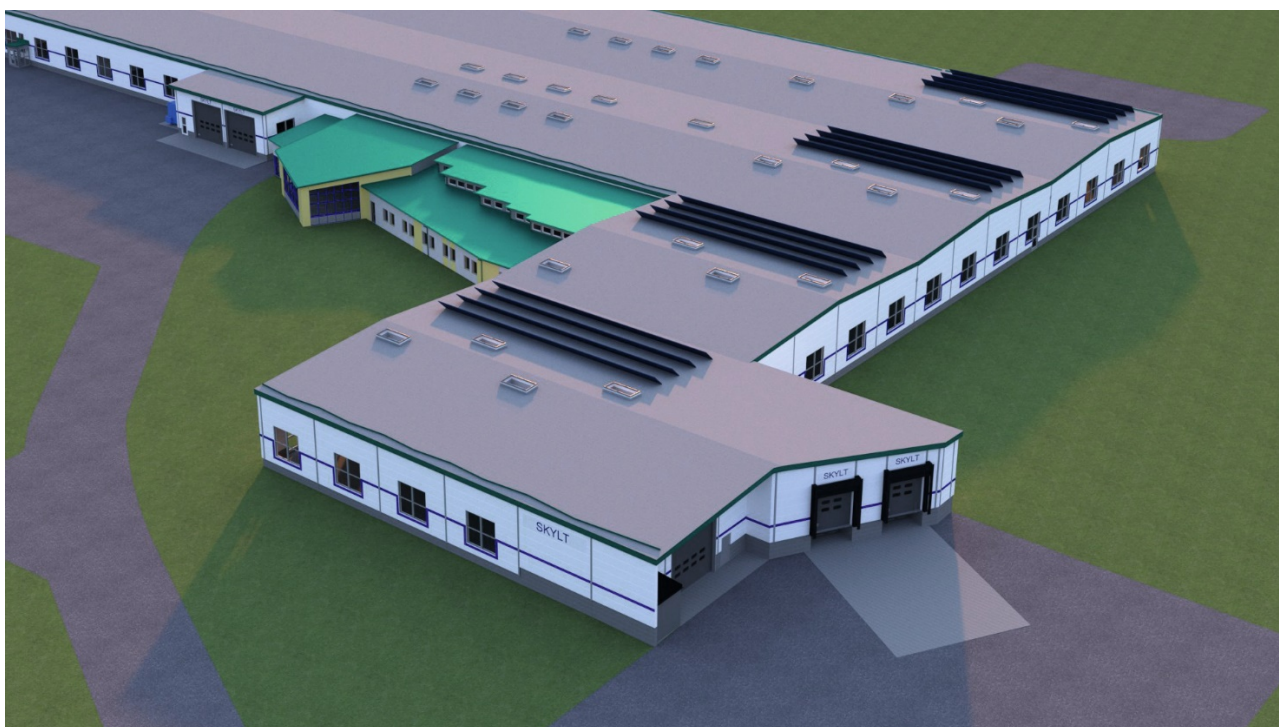


Photo: Byggingenjörbyrån i Gnosjö

ESBE is adding an area of approximately 2700 sqm to its existing factory in Reftele.

Christer Skogsfors, project manager for construction summarize:

- We are all very much looking forward to this exciting project where the construction is scheduled to start in mid-March and expected to be fully completed by the end of this year.

More info about ESBE: www.esbe.eu

Contact: Peter Cerny, CEO
Tel +46 371 57 00 66
E-post peter.cerny@esbe.eu

Christer Skogsfors, Project manager
Tel +46 371 57 00 31
E-post christer.skogsfors@esbe.eu

About ESBE

ESBE manufactures, develops and markets valves and actuators that regulate fluid-based systems in small and large buildings. The products deliver better energy utilisation, comfort and safety in systems for heating, cooling and delivery of tap water. Rising energy prices and increasing demands on comfort and convenience are crucial factors in all homes. The ESBE family, which is continually growing, currently comprises just over 200 employees and has annual sales of approx. 40 million euros. The head office and manufacturing plant is located at Reftele in Sweden. Our own sales companies run marketing and sales in the Nordic region, Germany, France, Italy, Austria and Poland. In addition, ESBE operates through distributors in just over 50 countries.