

ROTARY MOTORIZED VALVES

# MIXING VALVE

## SERIES T

ESBE 4-way valves Series T are specially designed for factory fitting to boilers. 4T, DN20, cast iron, PN 6. Internal thread.



T  
Internal thread

### OPERATION

The T valves have the two ports for the boiler side in a single flange.

The T valves have a double mixing function, i.e. a proportion of the hot water supplied from the boiler is mixed with the return water. This results in a higher return water temperature reducing the risk of corrosion and assuring a longer life for the boiler. They are designed to provide good control characteristics and reliability in operation.

The valves can be equipped with ESBE actuators series ARA600 and series 90. The valves may also be equipped with ESBE controllers series CRA210, CRB200 and CRC210.

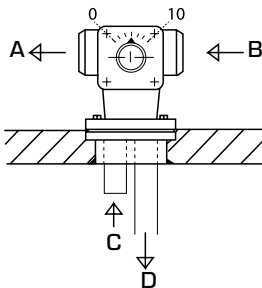
### SERVICE AND MAINTENANCE

All major parts are replaceable. The shaft seal consist of two o-rings, one of which can be replaced without the need for draining down the system or dismantling the valve. However, before doing so, the system must be depressurized.

### TYPICAL INSTALLATION

A = riser                      B = return  
C = riser, boiler              D = return to boiler

The scale plate is printed on both sides allowing inverted installation.



Series T

### VALVE T DESIGNED FOR

- Heating

### SUITABLE ACTUATORS AND CONTROLLERS

- Series ARA600
- Series 90
- Series CRC210
- Series CRB200
- Series CRA210

### TECHNICAL DATA

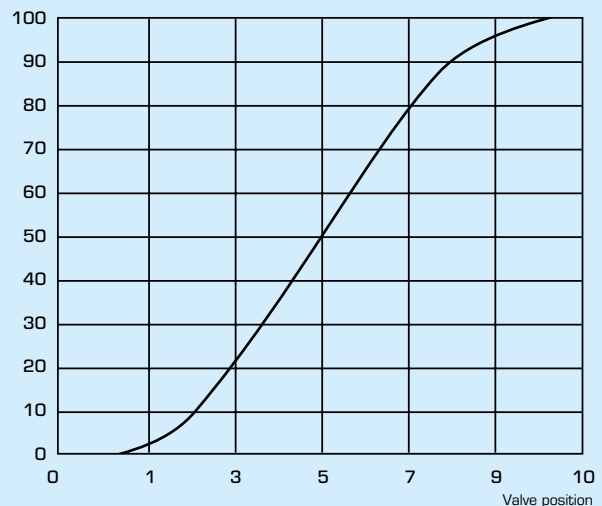
Pressure class: \_\_\_\_\_ PN 6  
 Temperature: \_\_\_\_\_ max. 110°C  
 \_\_\_\_\_ min. -10°C  
 Operation angle: \_\_\_\_\_ 90°  
 Torque: \_\_\_\_\_ 5 Nm  
 Leakrate in % of flow: \_\_\_\_\_ max. 1,5%  
 Connections: \_\_\_\_\_ Internal thread, EN 10226-1  
 Media: \_\_\_\_\_ Heating water (in accordance with VDI2035)  
 \_\_\_\_\_ Water / Glycol mixtures, max. 50%  
 \_\_\_\_\_ Water / Ethanol mixtures, max. 28%

Material  
 Body: \_\_\_\_\_ Cast iron EN-JL 1030  
 Slide/Spindle: \_\_\_\_\_ Brass CW 614N  
 Bushing: \_\_\_\_\_ Plastic  
 Cover plate: \_\_\_\_\_ Zinc  
 O-rings: \_\_\_\_\_ EPDM

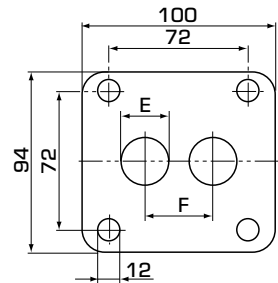
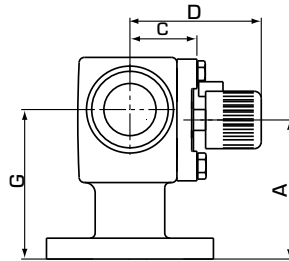
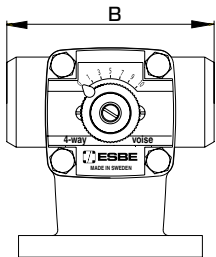
PED 2014/68/EU, article 4.3 / SI 2016 No. 1105 (UK)

### VALVE CHARACTERISTICS

% hot water



ROTARY MOTORIZED VALVES  
**MIXING VALVE**  
**SERIES T**



**SERIES T, INTERNAL THREAD**

Art. No.	Reference	DN	Kvs *	Connection	A	B	C	D	E	F	G	Weight [kg]
11300900	T 20	20	8	Rp 3/4"	80	115	39	76	20	35	86	2,7

\* Kvs-value in m<sup>3</sup>/h at a pressure drop of 1 bar. Flow chart, see product catalogue.