

ROOM THERMOSTATS

# ROOM THERMOSTAT SERIES TPx200



TPW214

ESBE thermostat Series TPx200 is a wireless electronic room thermostat for use in heating or cooling applications.

### APPLICATION

The ESBE series TPx200 is a wireless ON/OFF electronic room thermostat for use in heating or cooling applications. The thermostat can be connected to 2-point or spring return actuator, a circulation pump or directly to the boiler.

### VERSIONS

TPW214 is a wireless weekly programmable electronic room thermostat for use in heating or cooling application, operating with 2\*AA (1,5V) batteries. The regulating temperature range is between 5°C and 35°C and has 3 individual operating modes, comfort, economic or antifrost/Off. The modes are activated by the 7 days program with 48 programmable periods each day. The thermostat can also be set in holiday mode from 1 hour up to 99 days. The display shows the measured temperature, the activated mode and if the relay is activated.

TPW214 comes with a one-channel receiver TWR911, operating with 230V AC power supply. The receiver has LED light to indicate status and errors as well as a button for manually driving the output relay. Contact rating for the relay is 6(1)A@250V AC.

### TECHNICAL DATA

Ambient temperature: \_\_\_\_\_ max. 40°C  
 \_\_\_\_\_ min. 0°C  
 Ambient humidity: \_\_\_\_\_ 20...80% RH non-condensating  
 Sensor type: \_\_\_\_\_ NTC 4,7 kΩ@25°C  
 ErP Temperature controls class: \_\_\_\_\_ I  
 Energy efficiency contribution: \_\_\_\_\_ 1%  
 Enclosure rating — Room thermostat: \_\_\_\_\_ IP30  
 — Receiver: \_\_\_\_\_ IP4x  
 Contact rating: \_\_\_\_\_ 6(1)A @ 250V AC  
 Voltage, Room thermostat: \_\_\_\_\_ 2 x 1,5V LR6/AA  
 Battery endurance: \_\_\_\_\_ >2,5 years  
 Voltage, Receiver: \_\_\_\_\_ 230±10%V AC, 50Hz  
 Power consumption: \_\_\_\_\_ 11W  
 Radio frequency: \_\_\_\_\_ 868MHz  
 Maximum receiver distance: \_\_\_\_\_ >300 meter in free air  
 \_\_\_\_\_ >50 meter in buildings  
 (dependent on the building and environment)  
 Protection class: \_\_\_\_\_ II

Material  
 Housing — Room thermostat: \_\_ ABS + PC self-extinguishing V0  
 — Receiver: \_\_\_\_\_ ABS self-extinguishing V0

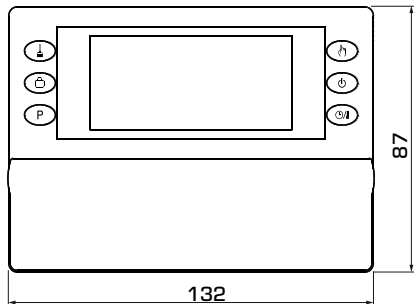
### Conformities and certificates:

CE LVD 2014/35/EU  
 EMC 2014/30/EU  
 RoHS 2011/65/EU  
 RED 2014/53/EU

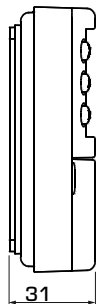
### SUITABLE ESBE ACTUATORS

Series	Control signal	ARA600	90	ARC300	ARD100	ARD200	ALG400	VZC/VZD	MBA100	ZRS100
<b>TPx200</b>	2-point	ARA6x5, ARA6x6, ARA6x7, ARA6x8	M97, M98	ARC361, ARC363	ARD155, ARD157	ARD255, ARD257	ALG434, ALG436	•	•	•

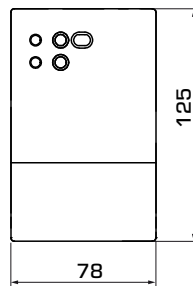
# ROOM THERMOSTAT SERIES TPx200



TPW214, Room thermostat



TWR911, Receiver



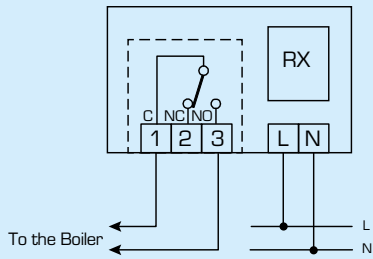
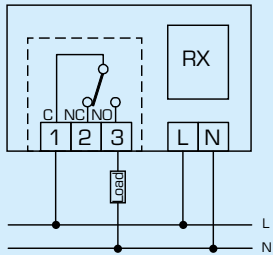
## SERIES TPx200

Art. No.	Reference	Application	Voltage	Contact rating	Setting range	Weight [kg]	Note
18003300	TPW214	Heating or cooling	2*AA (1,5V)	6(1)A@250V AC	5-35°C	0,18+0,16	Weekly programmable

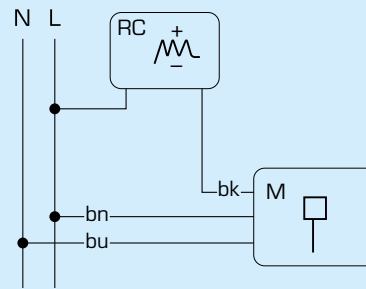
# ROOM THERMOSTAT SERIES TPx200

## WIRING

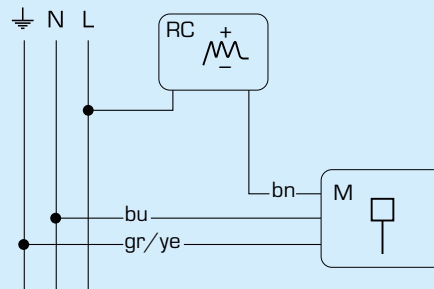
The wirings are typical examples of application; for further information, please check User instruction for all possibilities.



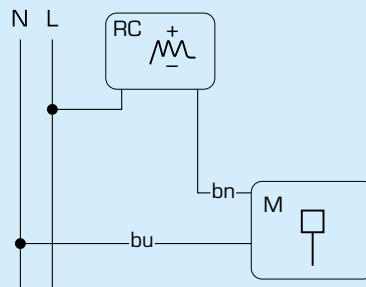
## ELECTRICAL CONNECTION TO ESBE ACTUATORS



Series ARA600, 90, ARC300, VZC/VZD, MBA100



Series ZRS100



Series ARD100, ARD200, ALG400